



Home is the most popular,
and will be the most enduring
of all earthly establishments

White Wings offers a range of options in its residential business portfolio to suit the specific needs and demands of different customer segments. With the growing aspiration and affordability levels of customers, the Group has in the recent past focused on the high-end premium and luxury condominiums. This is exemplified by its property FLAMINGO.

The idea of Flamingo is to identify an exclusive community of like-minded residents who would be proud to own a high-end apartment offering the best features and facilities on par with those available internationally.

Overlooking the picturesque landscaping, the Flamingo is a dream comes true for discerning customers who want nothing but the best.





Every day is a journey,
and the journey itself
ends at home because
it's the end of the world.

The project is designed in such a way that you get amidst a picturesque environment of interiors, where you live a life of peace and tranquility. Each ultra luxury apartment with independent floors designed to maximize your personal space.

Routine is boring. So at Flamingo it was decided that we create the extraordinary living space for you. That's why we took utmost care while creating it, making sure it has life and vigor. For sure at Flamingo each part of the space will make even the mundane feel exotic.





Luxurious Amenities

Luxurious Amenities

Benchmark Amenities

- Ac in 1 bedroom
- 80% area kept open for natural sunlight & air circulation.
- **Beamless flat slab area in Hall, Dining and Kitchen.**
- 10' Ft. floor height to provide cool ambience.
- 95' Ft. distance between 2 buildings.
- 14'.5" Ft. distance between 2 flats.
- No commercial, purely residential.
- Hot water geyser of standard brand.
- Water purifier of good company makes.
- **Elevators configuration**
- 2 no- auto door & high speed elevators with shaft size. 6'3" x 6'3" & 7'9" x 5'9" in each building of standard Company makes.
- **Club House**
- Gym with modern equipments & indoor game zone for carom, table tennis & Pool-table, etc.

Other Amenities

- **Store** - Kota stone rack in store with fully glazed tiles on wall.
- **Wall Finish** - Single coat mala plaster finish with white putty on internal wall.
- **Door** - Flush door shutter with laminate finish fitted in granite frame.
- **Windows** - Anodized coated aluminum section window fitted in granite frame.
- **Parking** - Allotted car parking
- Ground level, parking with paver blocks or cobalt of 4" x 4".
- **External ground** - Good quality paver in road & margin.
- **Entrance gate** - Modern architectural design in compound wall with gate.

Electrification

- Modular switches, concealed circuit wiring
- Sufficient electric points in all rooms
- M.C.B in individual flat for safety.
- Two-way light & fan points
- High ampere special electric point for freeze, oven, mixer A.C points in two bed Room
- Special points for TV internet, telephone

Reception Area

- High - end interior reception.
- Guest waiting lounge with sofa and decent furniture
- Inter-connectivity for communication with individual member, club house & security gate.

Landscape

- Huge green garden.
- The central garden has party lawn for enjoying birthday, marriage & party celebration.
- Gazebos for senior citizens
- Glorious water cascade

Kitchen & bathroom

- **Kitchen** - Black granite kitchen platform with s.s. sink
- 24" x 24" granamite tile up to lintel level.
- **Bathroom & toilets** - Toilets with designer c.p fittings of standard make & Sanitary ware of good quality in all bathroom.
- 12" x 18" designer tiles or 24" x 24" granamite matt finished Tiles up to lintel lvl.

Safety Features

- **Safe Home** - Fire safety as per GDCR norms
- Airport NOC for height permission
- Occupancy certificate from SMC
- N.A land with resident zone in SMC T.P scheme
- Individual registered sale deed

Generator Back-up

Silent generator of sufficient capacity with adequate power back up for lifts, general lighting and sufficient light points in each flat.

TERMS:-

- Stamp duty registration charges, VAT, service tax, Legal charges, G.E.B charges & society maintenance charges, etc. shall be borne by purchaser.
- Out station cheque shall not be accepted.
- Any new taxes announced by the Government / S.M.C / Authority will be born by the member / buyer during the project.
- Irregular payment may lead to cancellation of booking.
- Purchasers are strictly NOT PERMITTED to make changes alteration on any including elevation, external colour scheme or any other change affecting the overall design concept & outlook of the building.
- This brochure is intended only for easy display & information of the scheme & does not form part of the legal document.
- The developer reserves all rights to make any changes in the scheme including technical specification, designs, layout plan & all the purchaser shall abide by such changes.



Aimed at those who cherish only the very best with 80% open space

We're a world-class residential scheme that will set new standards for premium residential schemes: Flamingo is nothing less than a dream retreat with more than you expected.

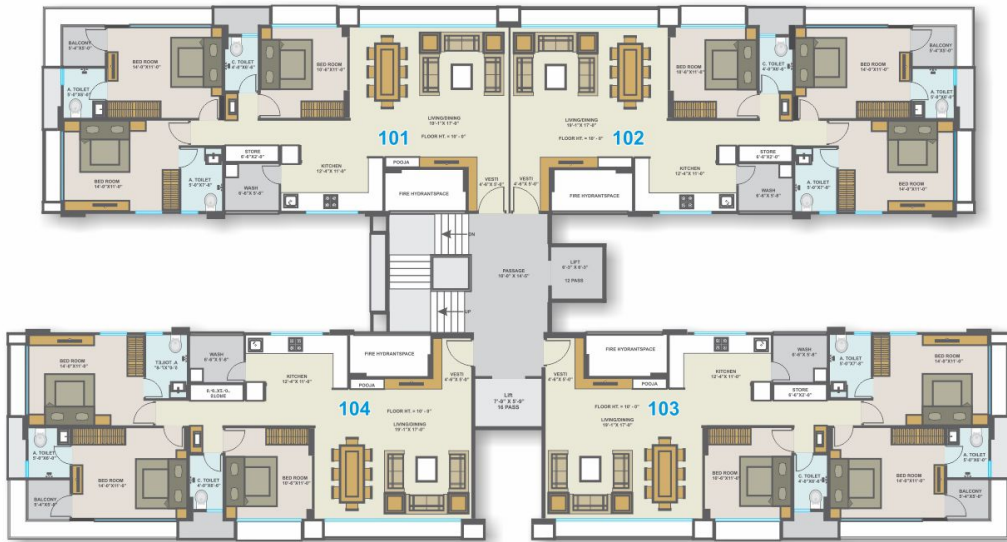
Each denizen in Flamingo enjoys state of the art amenities designed to create an experience that is revealed only by the royalties of yore. At Flamingo an idyllic charm will resonate in your life amid the lap of nature, against the backdrop of breeze lullabies.

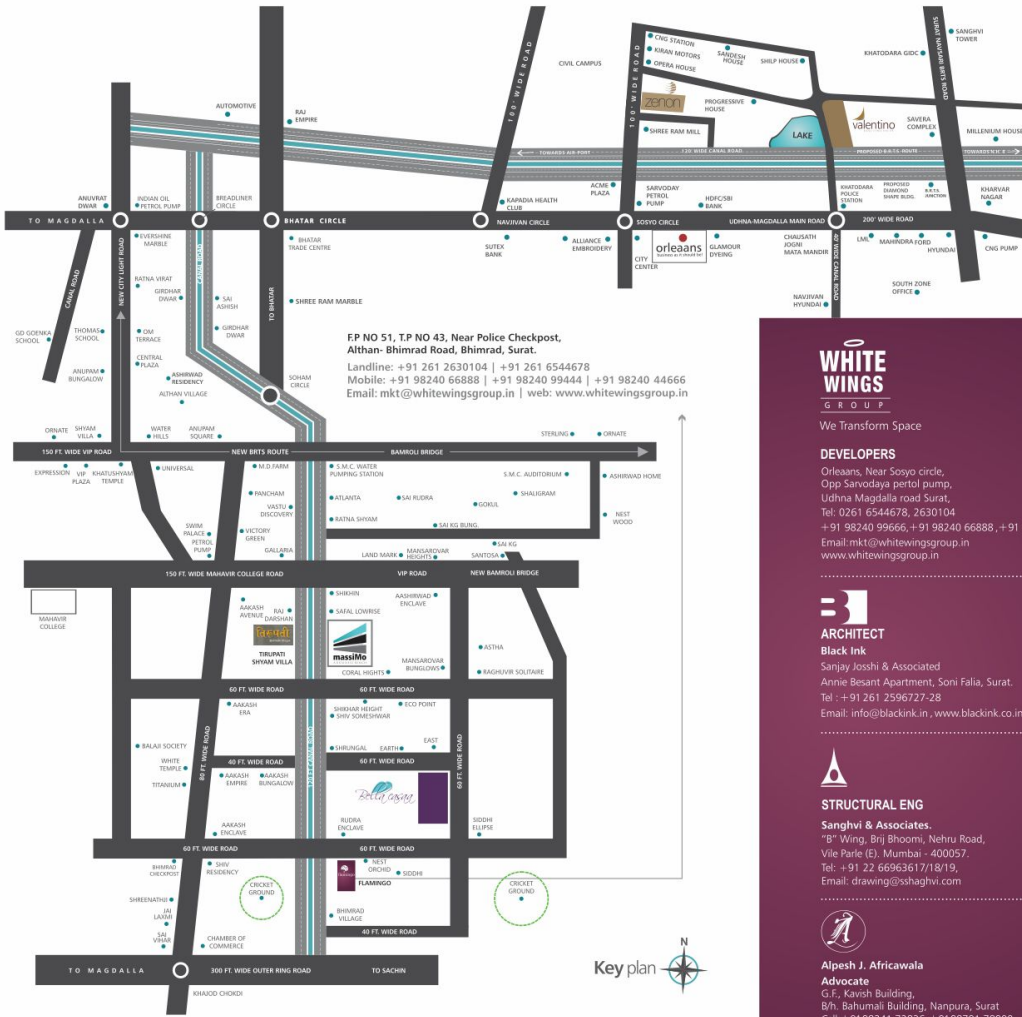
Here, everyday will be a celebration of life in the cosiness and warmth of your loved ones. Here you will live in the grandeur of a symphony created by the finest minds with their heart and soul.



Typical Floor Plans

Unit Plan
1915 Sq.Ft.





F.P NO 51, T.P NO 43, Near Police Checkpost,
 Althan-Bhimrad Road, Bhimrad, Surat.
 Landline: +91 261 2631014 | +91 261 6544678
 Mobile: +91 98240 66888 | +91 98240 99444 | +91 98240 44666
 Email: mkt@whitewingsgroup.in | web: www.whitewingsgroup.in

WHITE WINGS GROUP

We Transform Space

DEVELOPERS

Orleans, Near Sojyo circle,
 Opp Sarodaya petrol pump,
 Udhna Magdalla road Surat,
 Tel: 0261 6544678, 2631014
 +91 98240 99666, +91 98240 66888, +91 98240 44666
 Email: mkt@whitewingsgroup.in
 www.whitewingsgroup.in



ARCHITECT
Black Ink
 Sanjay Joshi & Associates
 Annie Besant Apartment, Soni Falia, Surat.
 Tel : +91 261 2596727-28
 Email: info@blackink.in , www.blackink.co.in



STRUCTURAL
Sanghvi & Associates.
 "B" Wing, Brij Bhoomi, Nehru Road,
 Vile Parle (E), Mumbai - 400057.
 Tel : -91 22 66963617/18/19,
 Email: drawing@sanghvi.com



Alpesh J. Africawala
Advocate
 G.F., Kevshi Building,
 B/h. Bahumali Building, Nanpura, Surat
 Cell: +91 98241 72836, +91 98791 78900
 Email : alpesh_africawala@yahoo.com



flamingo

An Upscale Urban Luxury